

PREVA – FLAWLESS IMAGING AND ENHANCED WORKFLOW

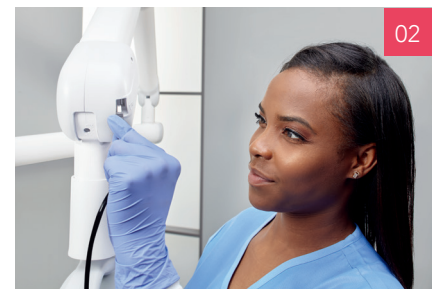
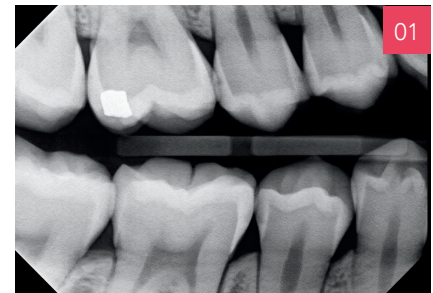
Preva packs many powerful features into one attractive, reliable system.

The Preva is the imaging workhorse of the dental office, used to detect cavities or other problem areas. With exceptional image quality and proven mechanics, Preva units are a pleasure to operate with effortless movement, drift-free positioning and minimum patient stress by getting the images needed with just one shot. Preva offers a powerful combination of features designed to provide maximal flexibility, razor-sharp images and years of productivity. Midmark Preva intraoral X-ray systems use a high-frequency direct current (DC) method of image capture in a range of solutions for your practice needs.

Enjoy the next level of convenience through Preva Plus integration with our ClearVision® sensor. ClearVision high resolution digital sensors achieve the ultimate in digital convenience, allowing captured images to be viewed with Progeny® Imaging Software or with one of several popular practice management and imaging programs.

Preva Intraoral DC X-ray System adds superior technology to the most common X-ray unit used by dental practitioners, to:

- Identify cavities and visualize tooth roots
- Examine the status of developing teeth
- Monitor the overall health of the bony area surrounding the tooth



FEATURES

- The Preva system is designed for effortless movement and fast one-handed positioning.
- The proprietary dual-arm braking system helps the head stay exactly where you position it without sagging or drifting.
- Preva provides a 0.4 mm focal spot for sharp, well-defined details that allow easy identification of pathology with both film and digital sensors.
- The easy-to-use LCD control panel display with large icons helps to identify target tooth, receptor type and patient size while also offering pre-programmed technique settings.
- The Preva Plus is configured with all the features of the Preva DC and Preva 2.0, plus integration with our ClearVision digital sensor, and built-in storage to keep sensors from being damaged or misplaced.
- All Preva models are available in multiple mounting configurations to best suit your operatory needs: wall, cabinet or mobile.
- Designed and packaged for fast and easy installation.
- Auto-calibration during servicing ensures consistent image quality.

Additional Features:

- 01** For consistently superior diagnostic images, selectable options allow you to determine the techniques you prefer to control according to clinical or procedural needs.
 - kV – 60, 65 and 70
 - mA – 4, 5, 6 and 7
 - Time – 20 milliseconds to 2 seconds
- 02** Grow with the Preva 2.0 that gives you a high-speed USB connector so you can go digital when your practice is ready.

PREVA SPECIFICATIONS

Line voltage	110-230 VAC +/- 10% (50 or 60 Hz)
Tube potential	60, 65, or 70 kVp
Tube current	4, 5, 6, or 7 mA
Exposure time	20 ms to 2 sec
Cone length	20 cm (8")
Focal spot	0.4 mm (IEC 60336)
Duty factor	1:15
Shipping weight (wall mount)	95 lb
Applicable documents Federal regulations:	21 CFR, UL, IEC, CE
Warranty	2-year, limited
Options	Exposure hand switch 12" cone 8" rectangular cone Choice of 56", 66", 76", or 82" (total reach) Two-stud mounting plate Metal stud-mounting plate
Minimum ceiling requirement	86.5" (219.7 cm)
Cabinet pass through (alternate)	66" Arm: 26.75" (W) x 47.5" (D) (68 cm x 121 cm) 76" Arm: 36.75" (W) x 47.5" (D) (93.5 cm x 121 cm)
Mobile	Base: 26.9" (W) x 36" (L) (68.3 cm x 91.4 cm) Arm reach: 56" (142 cm) Height: 76.9" (195.3 cm)

ORDERING GUIDE

	Preva DC	Preva 2.0	Preva Plus
Single Stud Mount			
193 cm Reach #1 Sensor #2 Sensor	PE7017	DCD7-W1B	DCD7-W1B/S1 DCD7-W1B/S2
168 cm Reach #1 Sensor #2 Sensor	PE7016	DCD6-W1B	DCD6-W1B/S1 DCD6-W1B/S2
142 cm Reach #1 Sensor #2 Sensor	PE7015	DCD5-W1B	DCD5-W1B/S1 DCD5-W1B/S2
Double Stud Mount			
208 cm Reach #1 Sensor #2 Sensor	PE7018-P	DCD8-W2B	DCD8-W2B/S1 DCD8-W2B/S2
193 cm Reach #1 Sensor #2 Sensor	PE7017-P	DCD7-W2B	DCD7-W2B/S1 DCD7-W2B/S2
168 cm Reach #1 Sensor #2 Sensor	PE7016-P	DCD6-W2B	DCD6-W2B/S1 DCD6-W2B/S2
142 cm Reach #1 Sensor #2 Sensor	PE7015-P	DCD5-W2B	DCD5-W2B/S1 DCD5-W2B/S2
Mobile			
Mobile	PE7017M	DCDM-W0B	DCDM-W0B/H/S1 DCDM-W0B/H/S2

ORDERING GUIDE

ClearVision® Integrated Digital Sensor System

- XSDN-01** ClearVision Digital Sensor System Size 1 sensor
XSDN-02 ClearVision Digital Sensor System Size 2 sensor

SENSOR SPECIFICATIONS

Film size equivalent	Size 1	Size 2
Dimensions	24 x 27 x 5.5 mm	32 x 43 x 5.5 mm
Active area	30 x 20 mm	36 x 26 mm
Sensor cable	90 cm, 3 m	
Computer interface	High-speed USB 2.0	
Computer requirements	Please see midmark.com for operating system and hardware requirements	

Specifications are subject to change without notice.

